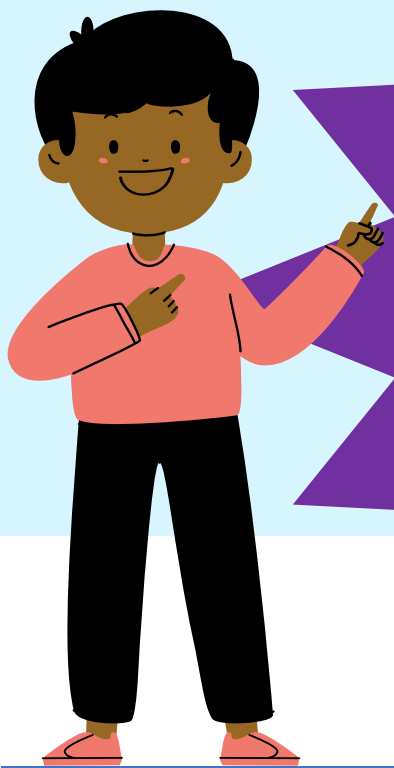


Salish Youth Network Collaborative

YOUTH VOICES WANTED!



Do you want to make DIFFERENCE in your community?

Youth Representatives:

- Shape Behavioral Health Systems
- Ensure the program is youth centered
- Guide the program to benefit your community

If you are interested:

- Visit an upcoming steering committee meeting
- Apply for one of the open seats
- Have a conversation with the selection committee



FOR MORE INFORMATION :
1-800-585-8477
SYNC-SBHASO@KITSAP.GOV.

MORE ON THE OTHER SIDE

FAQ

What is it?

- **Salish Youth Network Collaborative:** SYNC is a community-based systems coordination program for youth with complex behavioral health needs and their families.
- **Behavioral Health Systems:** Youth Mental Health and Substance Use Providers working together
- **Steering Committee:** Gathering of Community partners and members to guide the SYNC Program
- **Youth Representative:** A youth who is a member of the steering committee

Who can apply?

- Any youth between **13 and 18**
- Youth with lived experience in the Behavioral Health system
- Youth living in Jefferson, Clallam, and Kitsap Counties

How long can I serve as a representative?

- Up until your 21st birthday

What's in it for me?

- \$60 for each monthly meeting attended (90min)
- Transportation funds
- Volunteer hours
- Training opportunities



FOR MORE INFORMATION :

1-800-585-8477

SYNC-SBHASO@KITSAP.GOV.

